

UPDATED COVID-19 GUIDANCE: CHILD CARE PROGRAMS & PROVIDERS

In partnership, San Luis Obispo County Public Health, Community Action Partnership of San Luis Obispo County Child Care Resource Connection, and the Local Child Care Planning Council, have developed the following COVID-19 guidelines and recommendations to support child care operations in San Luis Obispo County.

We recognize that child care is essential to the sustainability of our county. These updated guidelines are provided to support child care programs operating as safely as possible and are based on the best available data at this time, and the practical realities of managing a child care program. As new data and practices emerge, the guidance will be updated.



IMPORTANT WEBSITES

www.covid19.ca.gov • www.readySLO.org • www.sanluischildcare.org

FACE COVERINGS

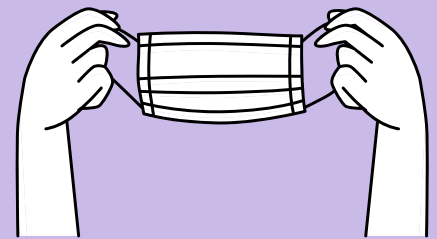
Workforce:

Face coverings or face shields need to be worn at all times.

Children:

Never place face coverings on babies or children under 2 because of danger of suffocation. Children over the age of 2 should be strongly encouraged to wear face coverings as highly recommended by Center for Disease Control (CDC).

Local Support: If masks are needed, contact CAPSLO Child Care Resource Connection.

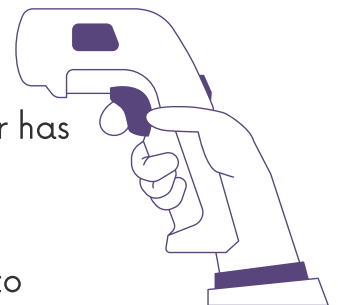


DAILY SCREENINGS

Programs must implement screening procedures for all staff and children before they enter the facility. Ask all individuals if they or anyone in their household has experienced any COVID-19 symptoms in the past 24 hours or has tested positive within the past 10 days. Affirmative responses to screening require exclusion from facility.

Take temperatures of individuals and conduct visual wellness checks prior to admittance into the facility. Monitor all individuals throughout the day for signs of illness. Programs must exclude individuals showing symptoms of COVID-19.

Current COVID-19 Symptom information can be accessed on the CDC website



GROUP SIZE & COHORTS

Children should remain in groups as small as possible to reduce exposure. It is important to keep children and teachers/staff with the same small group each day and to include children from the same family in the same group, to the greatest extent possible, in accordance with community care licensing guidance. Each program's ability to maximize physical distance may influence group size and ratios.



Taking into account all other protective measures (i.e. cleaning, hygiene, arrival procedures, and health screening), small group size and a cohort model of care will support containment and isolation in case of transmission.

Current Cohort Guidelines: A cohort is defined as a stable group of children, youth, and supervising adults that stay together for all activities and avoid contact with people outside of their group within the setting. The California Department of Public Health established a **maximum cohort size of 16 individuals** including children, youth and supervising adults (defined as child care staff, volunteers, parents, or other caregivers). Requirements for adult to child ratios still apply to licensed programs.

The maximum cohort size applies to all children and youth in a cohort even when all children are not participating at the same time. Please review the Guidance Related to Cohorts document UPDATED September 4, 2020 for more details.

ADDITIONAL RESOURCES

COVID-19 Updated Guidance: Child Care Programs and Providers - updated July 17, 2020
CA Dept of Public Health, CA Dept. of Social Services and CAL OSHA
www.covid19.ca.gov

California Department of Public Health - **Guidance Related to Cohorts - UPDATED September 4, 2020** <https://www.cdph.ca.gov/Programs/CID/DCDC/Pages/COVID-19/small-groups-child-youth.aspx>

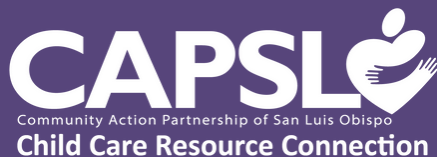
CA Department of Social Services - Community Care Licensing Division
www.cdss.ca.gov/inforesources/community-care-licensing

CAPSLO Child Care Resource Connection
www.capslo.org/child-care-resource-connection

SLO County Child Care Planning Council
www.sanluischildcare.org

For more information contact:

CAPSLO
Child Care Resource Connection
[ccrc referrals@capslo.org](mailto:crc referrals@capslo.org)
805.541.2272



Child Care Planning Council
San Luis Obispo County