

COVID-19 GUIDANCE: CHILD CARE PROGRAMS & PROVIDERS

In partnership, San Luis Obispo County Public Health, Community Action Partnership of San Luis Obispo County Child Care Resource Connection, and the Local Child Care Planning Council, have developed the following COVID-19 guidelines and recommendations to support child care operations in San Luis Obispo County.

We recognize that child care is essential to the sustainability of our county. Guidelines are provided to support child care programs operating as safely as possible and are based on the best available data at this time, and the practical realities of managing a child care program. As new data and practices emerge, the guidance will be updated.



IMPORTANT WEBSITES

www.covid19.ca.gov • www.readySLO.org • www.sanluischildcare.org

FACE COVERINGS

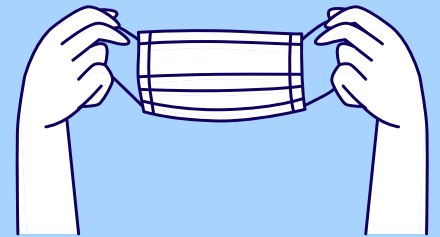
Workforce:

Face coverings or face shields need to be worn at all times.

Children:

Never place face coverings on babies or children under 2 because of danger of suffocation. Children over the age of 2 should be encouraged to wear face coverings.

Local Support: The SLO Child Care Planning Council and Quality Counts is purchasing neck gaiters for adults and children to be made available for child care programs.

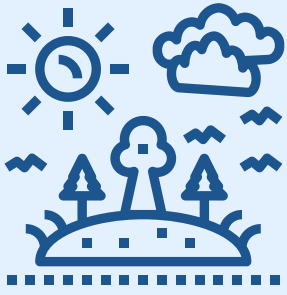


SINGING

The Governor's Executive Order recommended no singing due to data that showed increased transmission of COVID-19 in choral settings. Music and singing are recognized by SLO County Public Health as a critical part of child development. Child care settings can be flexible to support developmentally appropriate practices through the following examples:

- Singing with face coverings
- Lip Syncing
- Listening to recorded music
- Dance and movement





OUTDOOR LEARNING OPPORTUNITIES

COVID-19 has presented an opportunity for the Early Care and Education field to be flexible and support outdoor learning. Children benefit from spending more time outdoors, especially in natural places. ECE programs can adapt to our "new normal" by spending more time outdoors and supporting physical distancing.

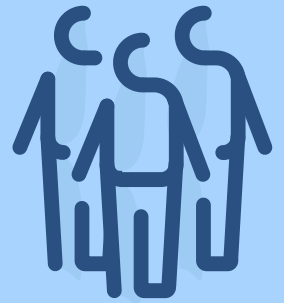
Local Support: Quality Counts will be incorporating additional workshops, trainings and coaching about Outdoor Classroom.

GROUP SIZE

Children should remain in groups as small as possible to reduce exposure. It is important to keep children and teachers/staff with the same small group each day and to include children from the same family in the same group, to the greatest extent possible, in accordance with community care licensing guidance. Each program's ability to maximize physical distance may influence group size and ratios.

Taking into account all other protective measures (i.e. cleaning, hygiene, arrival procedures, and health screening), small group size and a cohort model of care will support containment and isolation in case of transmission.

Local Support: The Local Partnership will develop additional guidance documentation, training and support to help programs incorporate a cohort model of care.



ADDITIONAL RESOURCES

[COVID-19 Updated Guidance: Child Care Programs and Providers - updated July 17, 2020](#)

CA Dept of Public Health, CA Dept. of Social Services and CAL OSHA
www.covid19.ca.gov

CA Department of Social Services - Community Care Licensing Division

www.cdss.ca.gov/inforesources/community-care-licensing

CAPSLO Child Care Resource Connection

www.capslo.org/child-care-resource-connection

SLO County Child Care Planning Council

www.sanluischildcare.org

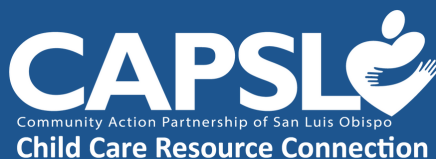
For more information contact:

CAPSLO

Child Care Resource Connection

[ccrc referrals@capslo.org](mailto:crc referrals@capslo.org)

805.541.2272



Child Care Planning Council
San Luis Obispo County